

ScreenPrint Platinum: Client/Server Installation



This help section provides details about installing ScreenPrint Platinum on a server, pre-configuring it for all users or groups of users, deploying the configuration over a network, and optionally password protecting the System Tray icon so that users cannot access the interface or change settings.

ScreenPrint Platinum is fully compatible with Windows 95, 98, ME, XP, NT 4, 2000 and 2003. In addition, it fully supports **Windows Terminal Server** and **Citrix Metaframe** environments, including full desktop sessions, single application, published application, and seamless application sessions. In fact, since it is the only screen capture software designed to work on a network with or without Citrix, ScreenPrint Platinum supports thin clients and dumb terminals regardless of the environment in which they are run.

Note: Since ScreenPrint Platinum does not register any components in the Windows Registry or share any components with other applications, system administrators need not worry about compromising the integrity of their servers.

Technical Support: Please email us at support@softwarelabs.com or call us at **425-653-2432** if you require assistance with your client/server configuration. Occasionally some "tweaking" is required in order to optimize ScreenPrint's operation in a specific network environment. We will be happy to walk you through and resolve any issues you might encounter.

Client/Server and Workstation Installation Options

The ScreenPrint installation file **spp49.exe** (**spg3.exe** for the trial version) can be installed on the server or on each workstation if you prefer not to utilize the client/server option.

Note: The ScreenPrint Platinum 30-day trial opens with a "**splash screen**" that requires the user to click a **Run ScreenPrint** button before the software loads. If you are running Windows Terminal Server or Citrix, this might cause an **Error 0203** message that will prevent the software from starting on client PCs. If this occurs, please contact us by email or phone and we will make a trial version available to you that does not include a splash screen.

Server Installation

Install **spp49.exe** or (**spg3.exe** for the trial version) on your server.

Client Installation

Workstations can run ScreenPrint from a desktop shortcut to the file **platinum.exe** in the **\Program Files\ScreenPrint** folder or in the program folder you selected during installation on the server. Alternatively, ScreenPrint can be configured to **Start Automatically with Windows** or a script or batch file can be written to start it on the workstations.

Users need permissions to access the server's **\Program Files\ScreenPrint** folder and to read/write to the folder in which ScreenPrint's configuration files reside. By default, the first time ScreenPrint is run, it creates the following folder and files:

- **\My Documents\ScreenPrint** - the Configuration Folder (to change this folder, see #4 below)
- **\My Documents\ScreenPrint\screenprint.cfg** - the main configuration file
- **\My Documents\SPG.INI** - stores the location (path) of the Configuration Folder

If you do not want ScreenPrint to write any files on the workstations or if the clients do not have a storage device, the Configuration Folder and files and captured image files can be stored on the server. To do this, see the following sections below:

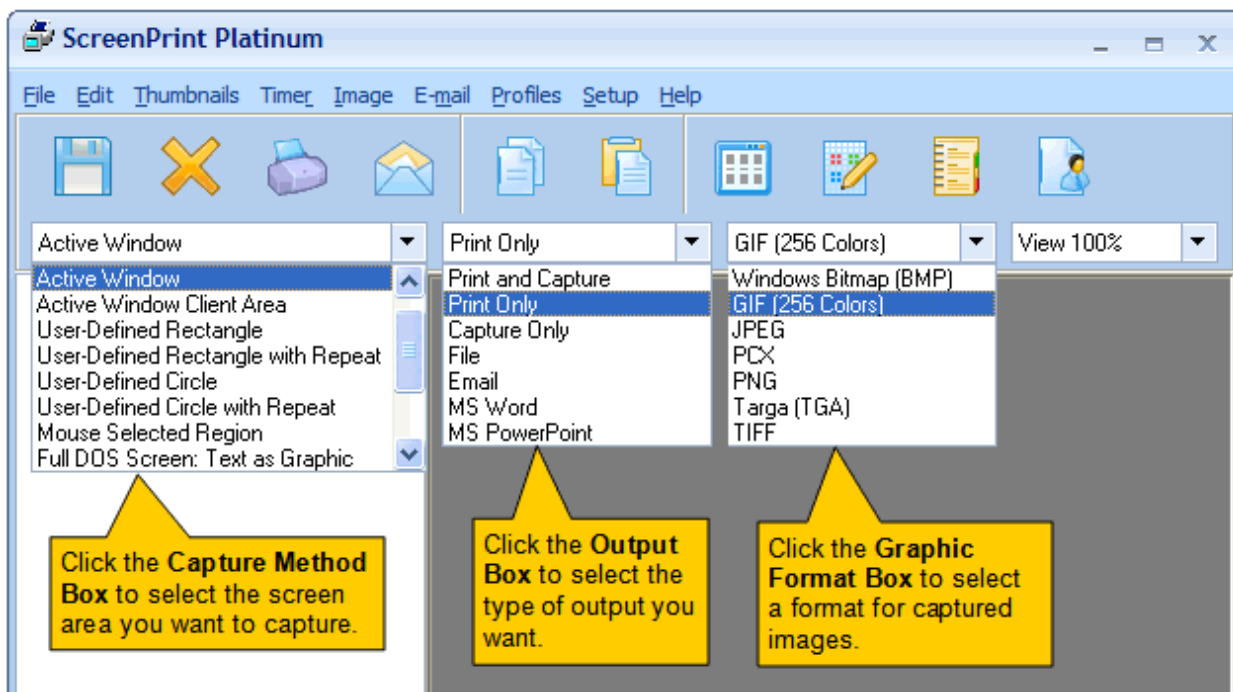
- **#4 - Configuration Folder Location**
- **#5 - Image Save Folder Location**
- **#9 - If you want each user's configuration to reside on the server (required for thin clients)**
- **Configuration Folders and Files Reference**

Pre-configuring Settings for All Users or Groups of Users

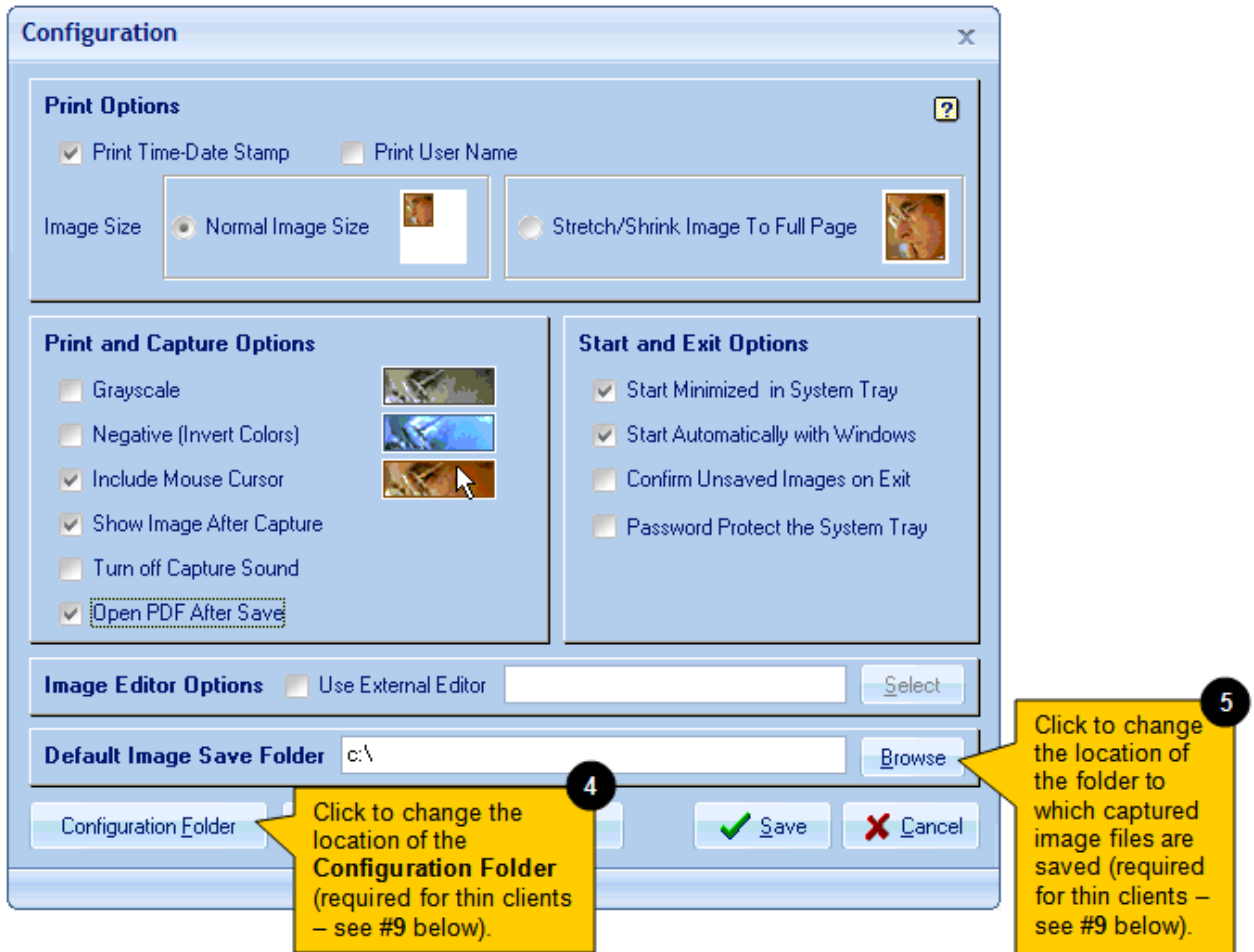
ScreenPrint's configuration can be standardized so that all users share the same settings or users in different groups share settings specific to their group. For example, data entry personnel can be limited to only printing the full screen and accounting personnel can be allowed to print and/or capture images from any area of the screen. Furthermore, pre-configured settings can be **password protected** to prevent users from changing them (see #6 below).

Follow these steps to configure ScreenPrint and deploy the settings to clients:

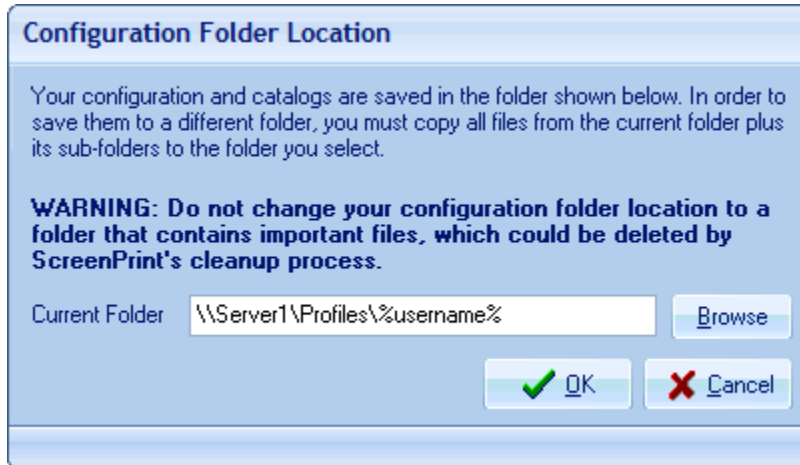
1. **Run ScreenPrint:** Run ScreenPrint on the server or on a workstation.
2. **Main Window Settings:** In the **Main Window** select your desired **Capture Method**, **Output** and **Graphic Format**.



3. **Configuration Window Settings:** Click **Setup > ScreenPrint** on the **Main Window** menu bar and select your desired settings in the **Configuration Window**.



4. **Configuration Folder Location:** ScreenPrint writes program settings to the file **screenprint.cfg** and other configuration files stored by default in **My Documents\ScreenPrint**. You can change this location by clicking the **Configuration Folder** button and selecting or entering a different drive and/or folder. Changing the folder location to **\ScreenPrint** or other folder name under each user profile on the server is required for clients lacking storage (thin clients, dumb terminals).



Any changes to the Configuration Folder location will be written to **My Documents\SPG.INI**, which stores the Configuration Folder path. Another way to change the Configuration Folder location is by editing the SPG.INI file in Notepad. In order to facilitate deploying the configuration files to each user profile (see #9 below), you can substitute **%username%** for the actual user name in the Configuration Folder path. **Note:** Click the Configuration Folder button and read the on-screen warning before changing the Configuration Folder location.

5. **Image Save Folder Location:** ScreenPrint defaults to C:\ in the "Save As" dialog. You can change this by selecting or entering a different drive/folder in the **Default Image Save Folder** box. This is required for clients lacking storage (thin clients, dumb terminals). **Note:** The Default Image Save Folder cannot be the same as the Configuration folder and should not include the word "screenprint."
6. **Password Protection:** If you want to password-protect your settings, check the **Password Protect the System Tray** checkbox under **Start and Exit Options**. Doing so will automatically set ScreenPrint to start minimized in the System Tray and users will not be able to access ScreenPrint's interface or change its settings. You might also want to check the **Start Automatically with Windows** checkbox or otherwise create a script or batch file to start ScreenPrint automatically with Windows. This combination of settings will protect your pre-configured settings and will make ScreenPrint entirely transparent to users, who will only need to press the Print Screen key to print the contents of their screens.

Since users normally need to access their captured images (to save, edit, email, etc.), password protection is generally enabled if users will only be printing their screens. However, enabling password protection may be appropriate if the administrator wants to access each user's captured images. In this case, where the **Output box** in the Main Window is set to **Print and Capture** or **Capture Only**, you might want to uncheck the **Confirm Unsaved Images on Exit** checkbox so that ScreenPrint will shut down with Windows without requiring user input in a confirm delete dialog. However this setting will result in the deletion of all unsaved images when Windows shuts down.

If appropriate for your usage, the Password Protection feature can save your organization a lot of time and money on user support.

7. **Save Your Configuration:** Click the **Save** button to save your settings.
8. **Printer Settings:** If you want ScreenPrint to print to other than the default printer, click **Setup > Printer** on the Main Window menu bar and select a printer. Any change you make will be saved in **\My Documents\ScreenPrint\PrinterSetup.cfg** (unless you changed the location of the Configuration Folder). **Note:** ScreenPrint will remember the selected printer and all printer settings from session to session, so it is not necessary to select a non-default printer or change printer settings each time ScreenPrint is run.
9. **Deploying ScreenPrint's Configuration to the Workstations or on the Server:**
 - **If you want each user's configuration to reside on his or her workstation:**
 1. Create a folder named **ScreenPrint** under the **\My Documents** folder on each workstation. If you changed the Configuration Folder location (see #4 above), then create the appropriate folder instead.
 2. Copy **screenprint.cfg** (and **PrinterSetup.cfg** if you selected a non-default printer) from **\My Documents\ScreenPrint** on the server to **\My Documents\ScreenPrint** (or the configuration folder you selected in #4 above) on each workstation.
 3. Copy **SPG.INI** from **\My Documents** on the server to **\My Documents** on each workstation.
 - **If you want each user's configuration to reside on the server (required for thin clients):**
 1. Create a folder named **ScreenPrint** under each user profile on the server.
 2. Copy **screenprint.cfg** (and **PrinterSetup.cfg** if you selected a non-default printer) from **\My Documents\ScreenPrint** on the server to the **ScreenPrint folder under each user profile**.
 3. Copy **SPG.INI** from **\My Documents** on the server to each **user profile**.

Follow the steps above to create different ScreenPrint configurations for groups that require different settings. Of course your pre-configuration can include only a change to the Configuration Folder location, if necessary, and thereafter users can select their own settings.

Configuration Folders and Files Reference

The layout below displays ScreenPrint's default configuration folders and files. If you change the location and/or name of the Configuration Folder (see #4 above), make sure the folder is unique and does not store any files other than ScreenPrint's configuration files. In addition, if you change the Default Image Save Folder location (see #5 above), do not use the word "screenprint" when naming the new folder.

All configuration folders and files can be stored on the server rather than on the workstations by substituting User Profile for \My Documents as displayed in the layout below.

\My Documents\SPG.INI	Stores the Configuration Folder path; created the first time ScreenPrint is run; re-written if Configuration Folder location is changed
\ScreenPrint	Configuration Folder stores configuration files and unsaved images; is created the first time ScreenPrint is run
screenprint.cfg	Main configuration file; is created the first time ScreenPrint is run; re-written if settings are changed in Main or Configuration Windows
PrinterSetup.cfg	Printer configuration file; is created if non-default printer is selected and/or any time printer settings are changed in Print dialog
\Catalogs	Catalog storage folder; is created the first time ScreenPrint is run; stores catalog (.alb) files when catalogs are created



The Software Labs, Inc.

Web: www.softwarelabs.com

Email: techsupp@softwarelabs.com

Voice: 425-653-2432 Fax: 425-643-8090